

DT60

New Challenges, New Properties



www.dynamical3D.com

DT60 Versatility

Leader in technical solutions for industrial processes.

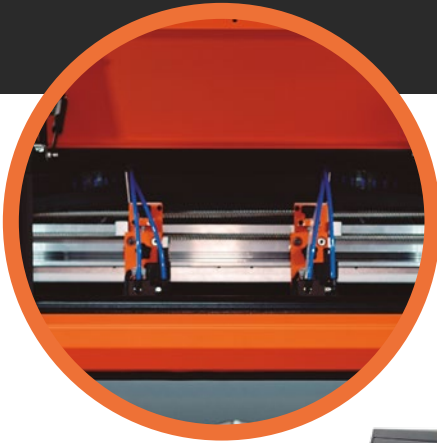
DT60 is an innovative, versatile and powerful 3D printer that represents the advance of FFF technology. Some features that will boost the concept of productive processes.



- Print volume **600 x 450 x 450 mm**
- Printer size **1200 x 780 x 1750 mm**
- Precision Z axis: **1,25 microns**
- Precision XY axis: **7,5 microns**
- Max. extruder temperature **500°C**
- Max. environment temperature **120°C**
- Nozzle diameter **0,6 mm**
- Other available diameters **0,4 / 0,9 / 1,2 mm**
- Titanium thermal barrier
- Double independent extruder
- 4 printing modes : **SINGLE, DUAL, TWIN, REFLEX**

Double filament load
Automatic filament change
Heated feeder
Jam detection
End of filament detection
Printing recovery system
Liquid refrigeration
Double tempered glass
Base fixed by vacuum
Great printing speed
Positioning controlled by encoder

- **220 - 240 V, 50-60 Hz**
- **Maximum consumption 3 kW/h**
- **7" LCD touch screen**
- **Remote monitoring**
- **Conectivity: Ethernet, USB**
- **UPS Accomodation**
- **MMS System - Modular maintenance system**



Liquid refrigeration

7" LCD touch screen

Max. extruder temperature **500°C**

Print volume
600 x 450 x 450 mm

Max. environment temperature **120°C**

Accommodation for the heated material

We have all these materials characterized and ready to print with Simplify 3D profiles

With the DT60 industrial 3D printer you can print :

- PLA
- PLA HQ
- ABS
- ASA
- HIPS
- TPU
- PETG
- PETG-CF
- PA12-CF
- PVA
- PP
- PC
- PC-ABS
- PA12
- PA12-GF





4 Printing Modes



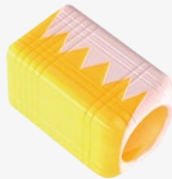
SINGLE



One extruder
printing



DUAL



2 materials printing



TWIN



Simultaneous
2 extruder printing



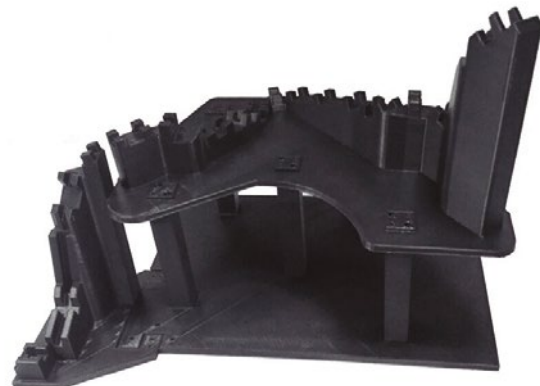
REFLEX



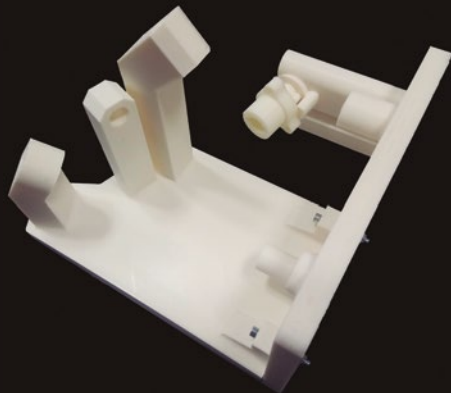
Mirror printing with
2 extruders



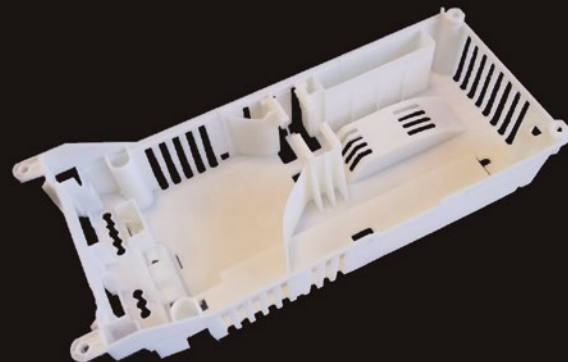
Prototyping



Gauges



Industrial accessories



Final product